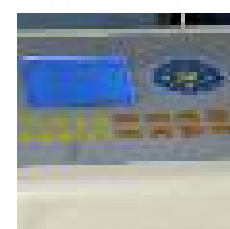


High Speed, Electronic Jacquard

SiGNATURE[®]
TEXTILE MACHINES



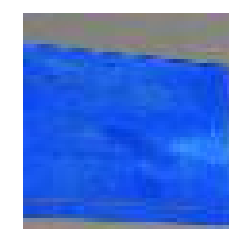
JACQUARD has a electronic mechanism which feeds the design patterns in the loom. This electronic mechanism replaces the perforated punch card mechanism. It has an external electronic unit called Selection Box which is driven by a computer. It stimulates punch card in the mechanism for each stroke of a loom for a given design. It has operating software where CAD can be operated for designing.



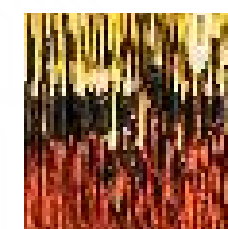
Control Panel



Control Card



Touch Screen Monitor



Hooks



Heavy Shaft



Solenoid Board

Technical Parameters

- Shed Mode : Double lift up-down mode
- Shed Range : 55-110 mm
- Shed Frequency : 200-600 times/min
- Format : 1344/2688 Hooks
- Speed : Can match high speed loom up to 600 RPM
- Computerized control panel with pen drive attachment
- High Power Solenoid
- Power saving control system
- Software patterns : EP, WB, JC5, BMP and CGI

Dimensions and Weight :

Hooks	length (mm)	width (mm)	height (mm)	weight (Kg)
1344	2430	1020	970	1200
2688	2630	1020	970	1500